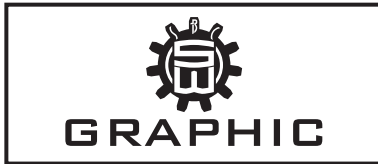


# How to install Vinyl

A short guide from SBC SignWorks, Inc. For all your sign needs log on to [www.sbcsignworks.com](http://www.sbcsignworks.com) or contact us at (813) 239-2409.

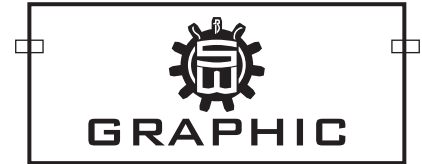
①

Roll Graphic out flat



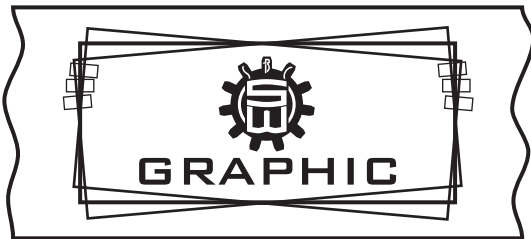
②

Put Tape on ends



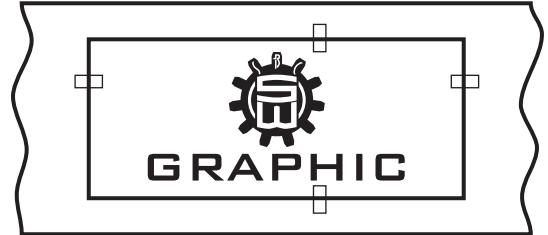
③

Align to Substrate using Tape to hold in place



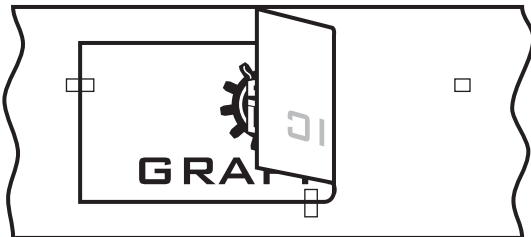
④

Add a Tape Hinge about 2/3rds across



⑤

Tear through Tape and fold side back



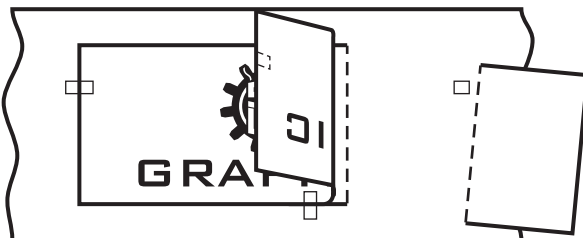
⑥

Roll the Backing Paper off of the Transfer Tape



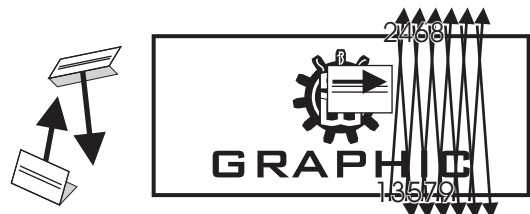
⑦

Cut off a straight piece from the Backing Paper



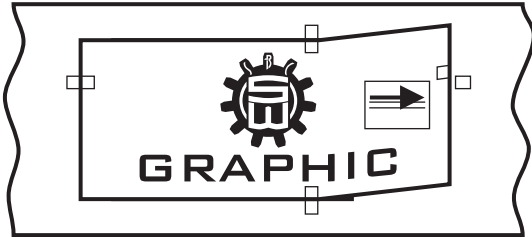
## NOTE - HOW TO BURNISH!

To Burnish, rub the Squeegee using firm, even, angled, overlapping strokes at a downward angle from side to side across the Transfer Tape starting where the Backing Paper was cut.

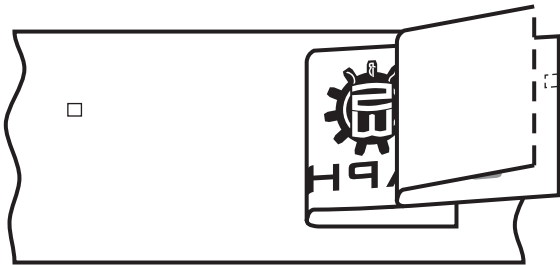


# How to install Vinyl

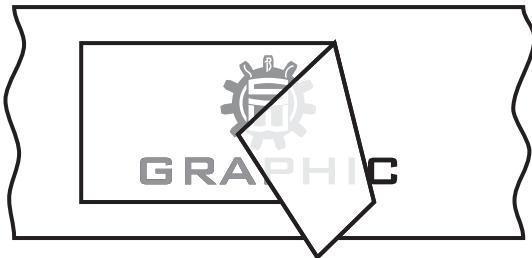
- ⑧ Aligning the torn piece of Tape and, holding the end of the Transfer Tape off the Substrate, Burnish the Graphic down.



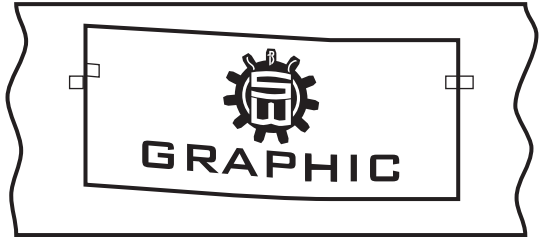
- ⑩ Fold back the Graphic and roll the Backing Paper off the Graphic starting at the Cut Line.



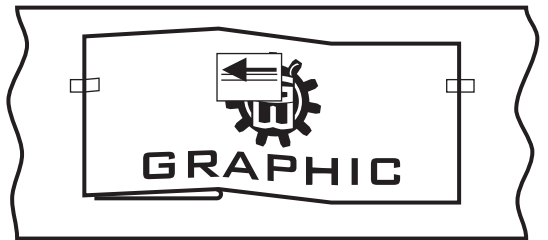
- ⑫ Once the Graphic is fully burnished down, remove all tape and peel off the Transfer Tape at a low, sharp angle.



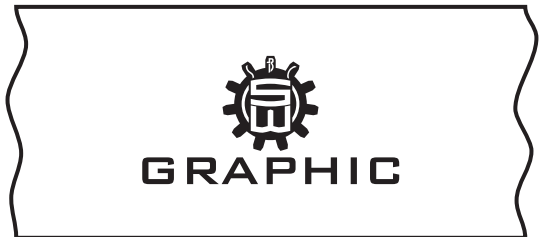
- ⑨ Remove the Hinges, tear the Tape on the other end.



- ⑪ Align Tape and Burnish from the Cut Line, peeling the Backing Paper from under the Graphic as you go along.



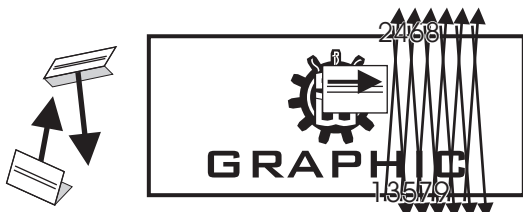
- ⑬ Remove any bubbles by using the corner of a razor blade or a sharp pin or needle and a rolling thumb.



Smile.

## NOTE - HOW TO BURNISH!

To Burnish, rub the Squeegee using firm, even, angled, overlapping strokes at a downward angle from side to side across the Transfer Tape starting where the Backing Paper was cut.



**SIGNWORKS** INC.

2601 E. Henry Ave., Bldg E  
Tampa, Florida 33610

(813) 239-2409

Fax (813) 239-1014

[www.sbcsignworks.com](http://www.sbcsignworks.com)